

Autodesk®

Productstream® 2008

Control your data.
Control your business.



Autodesk®

A Practical Approach to Data Management

In today's manufacturing environment, accelerating product development cycles is the key to staying ahead of the competition. By improving design reuse and collaboration among team members, and by automating the design process, your company can shorten development cycles and get products to market faster.

Facing these issues?

- Too much time is spent searching for design data.
- Good designs are being unintentionally overwritten.
- Existing product designs cannot be reused to shorten project times.
- It is difficult to enable team-based design across multiple teams.
- Design and manufacturing are unable to easily share design data.
- Manual processes for revision and release control are slow and error-prone.
- It is difficult to predict the impact of proposed changes across different product designs.
- Design teams are unable to track who, when, or why design changes are made.
- High-end product lifecycle management (PLM) systems are too complicated and expensive.

Discover Autodesk's unique approach to data management.

The Autodesk® Productstream® family of product data management (PDM) applications provides a modular and practical approach to controlling your design data and maximizing the value of your investment in design data. Whether your business demands standard, ready-to-use applications or a custom, highly configured implementation, a Productstream offering is right for you. Productstream users have consistently shortened product development cycles and produced higher-quality manufactured goods, all while avoiding the complications and expense traditionally associated with other PDM systems. Accelerate development cycles and optimize your company's investment in design data by using Productstream software to organize information, manage data, and automate key processes.

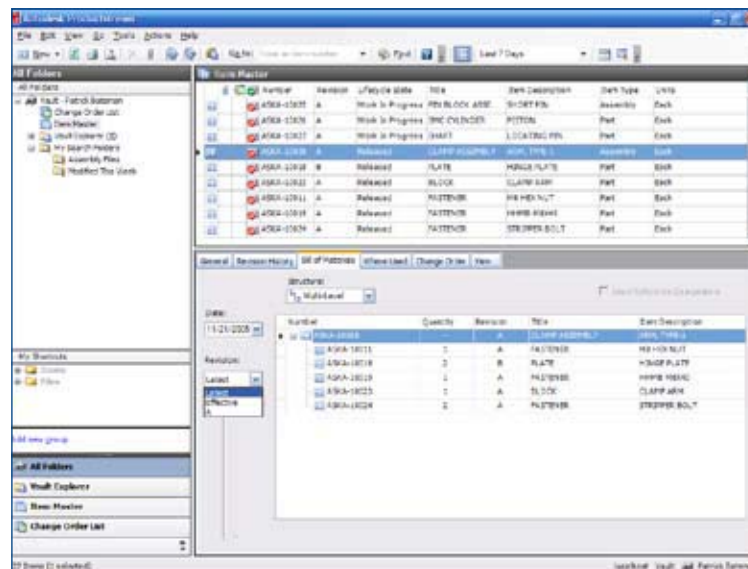
Organize Design Data for Better Reuse

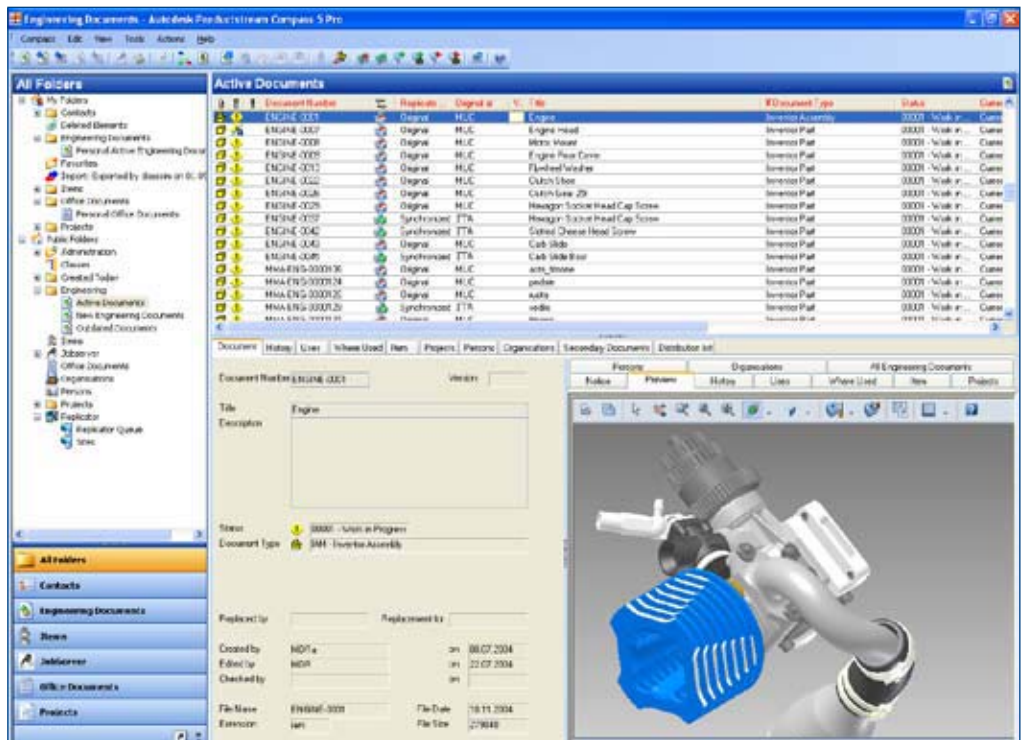
Maximize the return on your company's investment in design data by driving design reuse with Productstream. By centralizing the storage of all design data and related documents, users can better organize information and reduce the time needed

to find, reference, and reuse design data. As product designs evolve and become more complicated, Productstream protects designers and engineers from unintentional overwriting of good designs. In addition, users save hours of valuable design time with powerful tools to rapidly copy and reuse design data—reducing the time required to start a new design.

Automate and Manage Product Release and Change

A major factor in getting products to market faster is maintaining control of design data throughout its useful life. Obstacles to maintaining control typically include manual processes for release and bill of materials (BOM) management, which are slow and error-prone—ultimately leading to design project delays and shop-floor errors. By automating these key processes, Productstream helps design workgroups maintain control over design data at all times, enables the creation of accurate engineering BOMs that can be used to predict the effect and cost of change, and drives production.





Increase Sharing and Collaboration

Efficient sharing of design data is crucial for success in manufacturing. From the automation and capture of design reviews to the distribution and synchronization of design data to remote groups, the Productstream family of applications enables better collaboration between designers, design workgroups, manufacturers, and suppliers. By using DWF™ technology and Autodesk® Design Review software, Productstream gives team members access to the latest designs and makes it possible to capture feedback from tooling, assembly, or fabrication much earlier—preventing costly errors later in the process.

In addition, Productstream enables users to exchange design information with enterprise resource planning (ERP) and other applications, using standardized templates or custom integrations to reduce errors associated with manual BOM data entry. Another element of efficient sharing of designs is the ability to track when, why, and by whom design changes are made in the collaboration process. With Productstream, users create an electronic paper trail that notifies decision makers, captures markups, tracks the approval flow, and maintains a complete history of design revisions.

DWF Technology and Autodesk Streamline

Accelerate your product development process with Autodesk Collaboration Solutions, by sharing and managing documents across your organization and beyond your firewall.

- Autodesk Design Review software allows your extended team to digitally review, measure, mark up, and comment on 2D and 3D designs while protecting your IP. Tight integration with Autodesk® Inventor™ and AutoCAD® software applications allows for accurate communication of design information, and DWF-based markups can be round-tripped to speed the revision process. Autodesk Design Review software is available as a free* download from www.autodesk.com.
- Autodesk Streamline® on-demand collaborative project management solution provides a central online location for storing, managing, and controlling project documents, and Autodesk Design Review software is embedded within Autodesk Streamline to speed reviews and approvals.

Autodesk Manufacturing

Never before have design applications and data management tools come together to simplify the way manufacturers design products and drive them through the manufacturing process. Autodesk provides a complete, interoperable line of industry-leading software integrated with a worldwide network of services and partners. Gain access to technical expertise for implementation, and utilize training and support programs direct from Autodesk to help use your design and data management software more effectively. Software maintenance programs allow you to stay up-to-date with the latest product releases and upgrades for your software. Designed to be deployed incrementally for minimal business disruption, Autodesk tools for manufacturing provide the most effective way to stay ahead of the competition and achieve maximum return on your software investment.



applied engineering technology, inc.

763-420-6600

1-866-941-6600

www.ae-solutions.com/autodesk

sales@ae-solutions.com

Learn More or Purchase

For more information about the Autodesk Productstream family of data management applications, visit www.autodesk.com/productstream.

For more information on extending the power of your data management technology, visit www.autodesk.com/subscription.

For more information on making the most of your software investment, visit www.autodesk.com/consulting.

For more information on Autodesk Design Review, visit www.autodesk.com/designreview.

For more information on Autodesk Streamline, visit www.autodesk.com/streamline.

Purchase Autodesk Productstream through your Autodesk Authorized Reseller. To locate the reseller nearest you, visit www.autodesk.com/reseller.

*This product is subject to the terms and conditions of the end-user license agreement that accompanies download of this software.

Autodesk, AutoCAD, Autodesk Inventor, Autodesk Streamline, DWF, Inventor, and Productstream are registered trademarks or trademarks of Autodesk, Inc., in the USA and/or other countries. All other brand names, product names, or trademarks belong to their respective holders. Autodesk reserves the right to alter product offerings and specifications at any time without notice, and is not responsible for typographical or graphical errors that may appear in this document. © 2007 Autodesk, Inc. All rights reserved. 00000000000117477