

Autodesk®
Productstream®
2008

A practical approach
to data management.



Organize Design Data for Better Reuse

Maximize return on your company's investment in design data by driving design reuse with Productstream.

By centralizing the storage of all engineering data and related documents, users can better organize information and reduce the time needed to find, reference, and reuse design data.

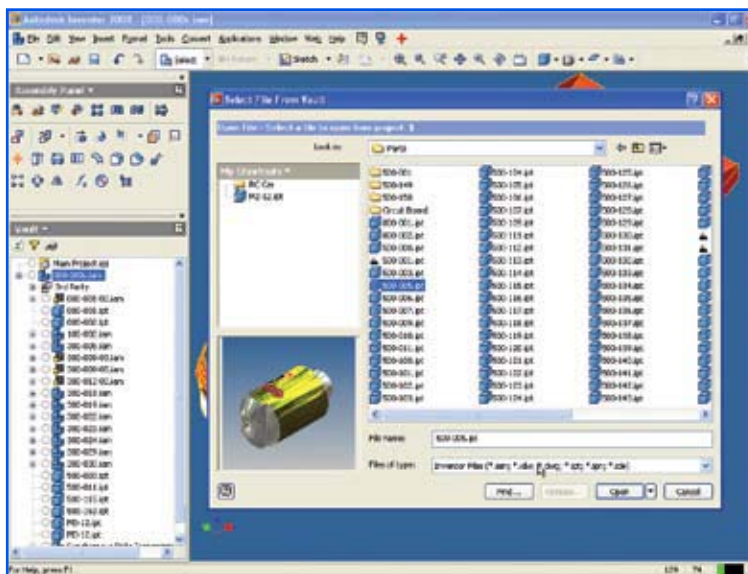
As product designs evolve and become more complicated, Productstream protects designers and engineers from unintentional overwriting of good designs. In addition, users save hours of valuable design time with powerful tools to rapidly copy and reuse design data, reducing the time required to start a new design.

Autodesk Vault Foundation

Reduce complex deployments by taking advantage of your existing investment in Autodesk® Vault software, included with all Autodesk Manufacturing applications. Productstream can be added to Vault at any time, enabling you to manage product release and change, and collaborate with others outside your design team.

Multi-CAD and Office Integration

Capture, manage, and reuse all design-related information throughout the product lifecycle. Productstream is tightly integrated with Autodesk® Inventor™ software, all AutoCAD® software-based manufacturing products, and third-party design and productivity applications such as SolidWorks®, Pro/ENGINEER®, and Microsoft® Office software.



Organize Design Data for Better Reuse

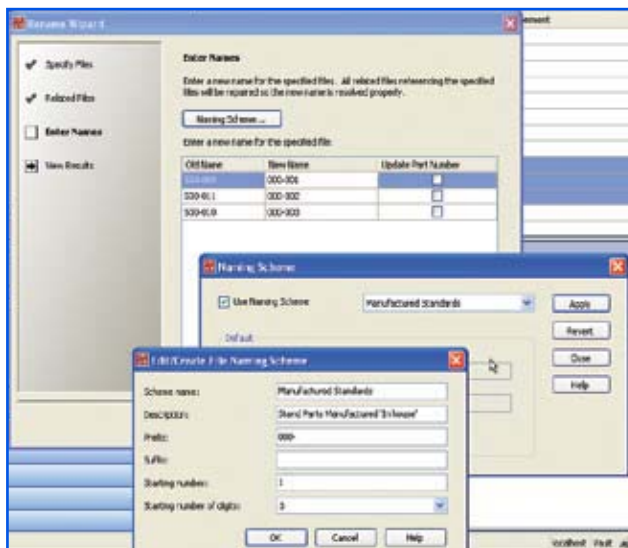
Copy Design

Save hours with powerful copy functionality that prevents users from having to re-create models and drawings. With Copy Design, users copy an entire design, including all related files. This process creates a new design and provides the option to choose which files are copied and given new names, and which files are reused.



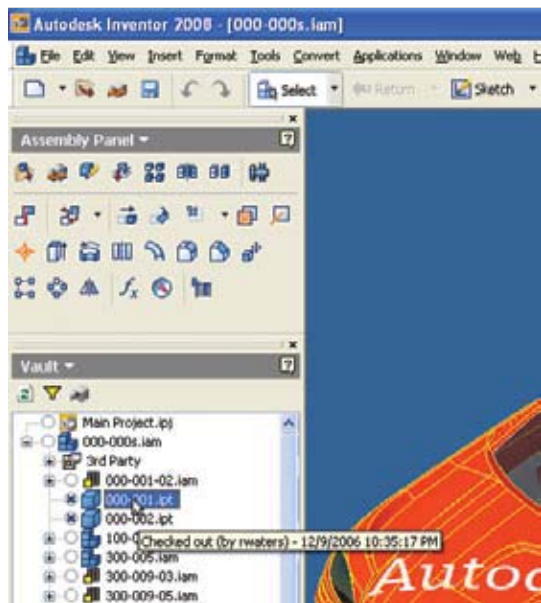
ENHANCED Rename

Conform to naming and numbering conventions by quickly and easily renaming design files and supporting documents. With the Rename feature, users can rename files stored in the vault using predefined naming schemes without breaking design dependencies between existing files, and export a complete report to document the process.



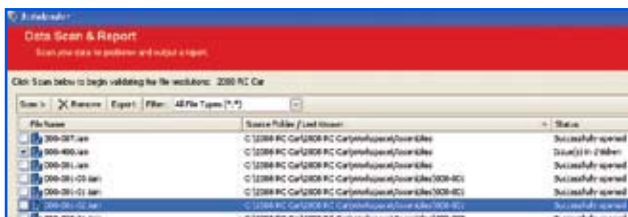
Multiuser Management

Enable multiple users to safely and simultaneously interact with the same design data. Productstream provides functionality that enables multiple users to work on the same design without overwriting each other's data.



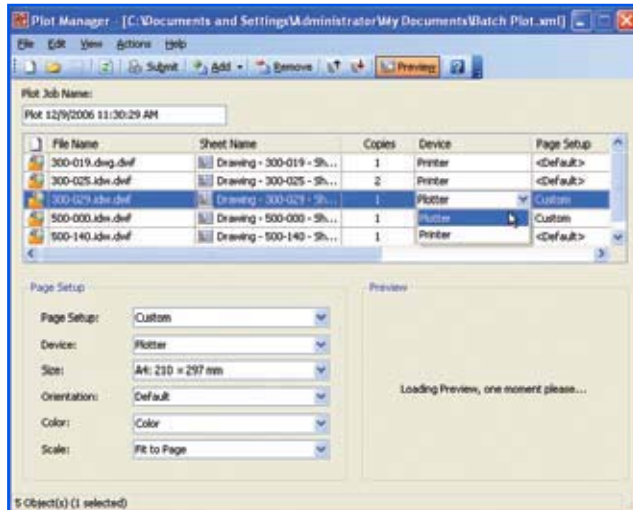
ENHANCED Autoloader

Rapidly add large quantities of design data and supporting documentation to the vault with minimal effort. The Autoloader utility provides tools to gather, analyze, prepare, and load existing Inventor, AutoCAD, and flat files (for example, PDF, TIF). This tool helps users detect and repair duplicate Inventor files and missing references before adding files to the vault.



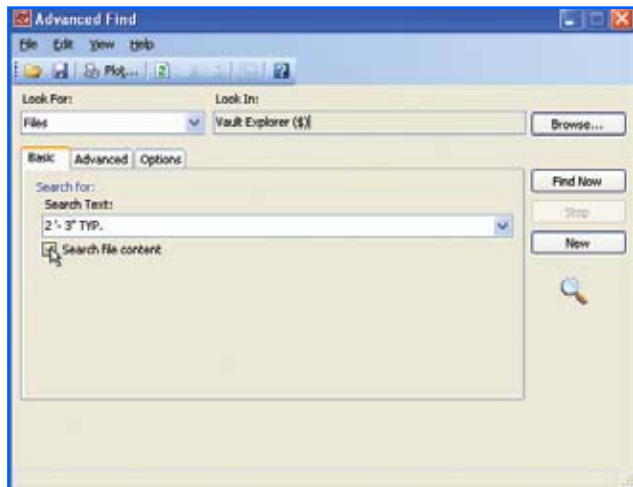
NEW Batch Print/Plot

Reduce time spent on administrative tasks by using the Batch Print/Plot Manager. Create, manage, and reuse print or plot jobs for all managed files with full support for watermarking and stamping.



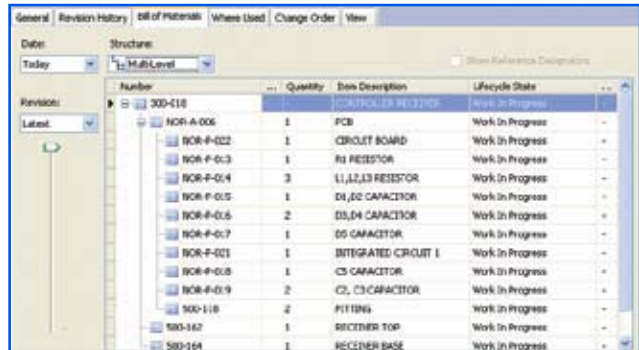
Full Content Search

Quickly search through design and related information to find and reuse existing design information. Productstream enables advanced searching by automatically extracting and indexing the complete contents of Microsoft® Word, Excel®, PowerPoint®, and AutoCAD files.



BOM Views

Review and use historical information to make educated design decisions. View bill of materials (BOM) data hierarchically to investigate sub-assemblies, or as a flat or "rolled up" view. These views provide a complete parts list with information such as item counts. Use date-specific filters to view BOM information for a specified date, current effective state, or the default "today" view.



Automated Item Numbering

Automatically assign a unique number to items based on your corporate naming standard. Numbering formats can be sequential, predefined lists, delimited, and fixed or free text.



Organize Design Data for Better Reuse

Create Items Not Related to Files

Create and add new items in Productstream to build complete product BOMs. Add packing materials, fluids, and documentation to manage BOMs right in the Productstream software. The ability to add items not designed in the computer-aided design (CAD) system makes it easy to keep a complete record of all items included with a product.

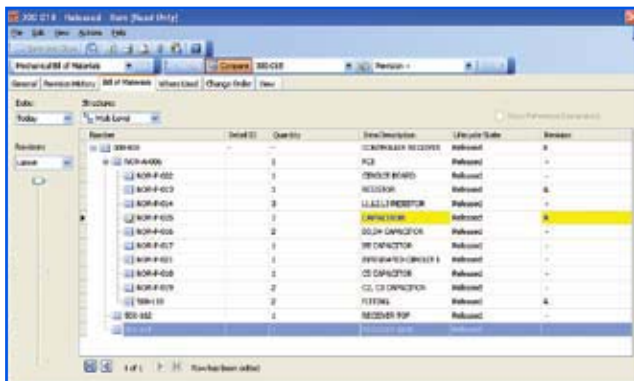
User-Defined Properties

Customize fields in item records without the need for special administration to create additional documentation, such as plant location or design group. Fields can contain numeric, text, yes/no, or date/time properties from the user interface without any need for back-end programming.



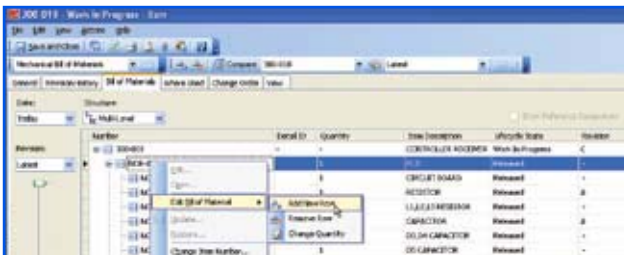
BOM Compare

Quickly identify the difference between two BOMs using graphical cues to view the history of revisions between them.



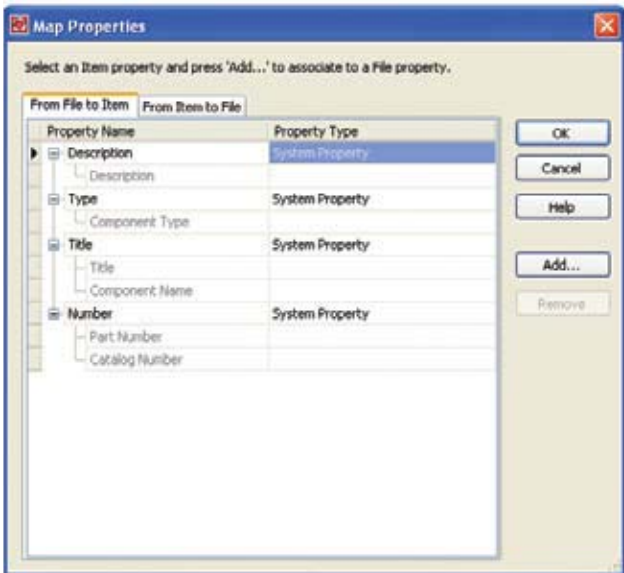
BOM Editing

Exercise complete control over the BOM using a simple interface to manage materials and quantities required for a design. Add, delete, or change BOM items and quantities to maintain an accurate BOM.



Property Mapping

Bidirectional property mapping means users can exchange and synchronize attributes between CAD files (Inventor, AutoCAD, AutoCAD® Mechanical, and AutoCAD® Electrical) and Productstream items.

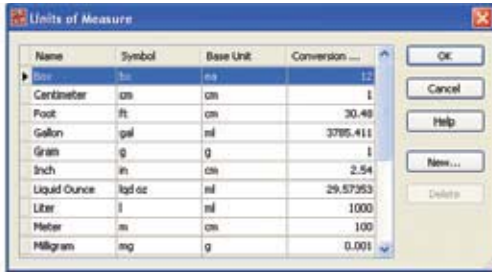


Item to File Attachments

Attach files, such as Microsoft Office documents, to items. When design files are changed, attached items automatically update to maintain the link to the new version of the file. Designers and nondesigners can attach and consolidate related data to items to maintain a complete record of all documentation.

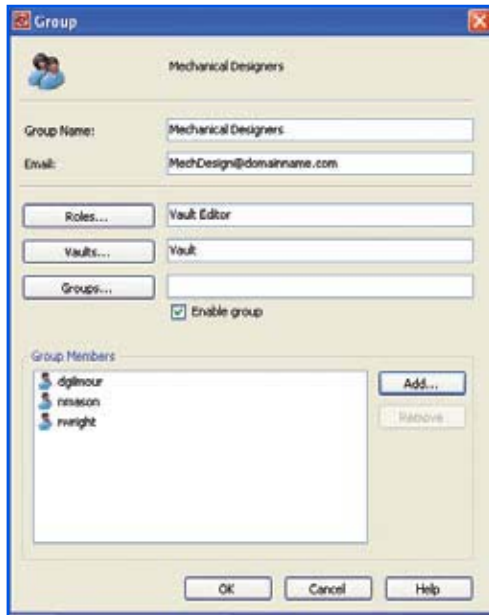
Unit of Measure Support

Specify the base measure of items, including mass, volume, quantity, and length. Accurately roll up BOMs, providing correct quantities and units of measurement for a complete product BOM.



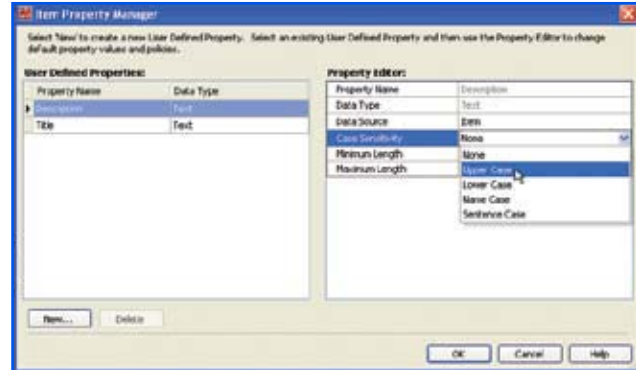
Groups

Improve security and reduce administration with simple group-based rights management. Group users based on their department, position, or role. This function also enables users to create personal groups without administrative rights.



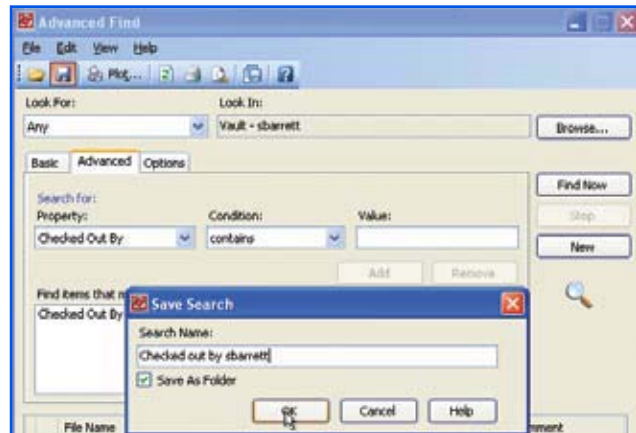
Item Property Policies

Enable users to search item properties with confidence by enforcing company standards used in item descriptions. Administrators can create rules that govern formatting and inclusion of required information for item properties and BOMs. These rules then validate that forms are complete and properly formatted before users add an item to the item master.



Saved Searches

Save most-often-used search criteria as favorite searches, and then save time by reusing them.



Shortcuts (Favorites)

Organize frequently used items by creating shortcuts. Save time by linking shortcuts to any frequently used files, folders, or engineering change orders (ECOs).

Intuitive User Interface

A Microsoft® Windows® look and feel provides a familiar, easy-to-learn interface. Use drag-and-drop editing, and customize menus and toolbars to match your work style.

Automate and Manage Product Release and Change

A major factor in getting products to market faster is maintaining control of design data throughout its useful life.

Obstacles to maintaining control typically include manual processes for release and BOM management, which are slow and error-prone—leading to manufacturing errors on the shop floor and design project delays. By automating these key processes, Productstream helps design workgroups maintain control over design data at all times, enables the creation of accurate engineering BOMs that can be used to predict the effect and cost of change, and drives production.

Revision Management

Accurately track changes made to designs and prevent design errors by helping to ensure that changes to a part, assembly, or associated document will not affect other designs in which they are used. Control and review the history of design data using flexible revision schemes.

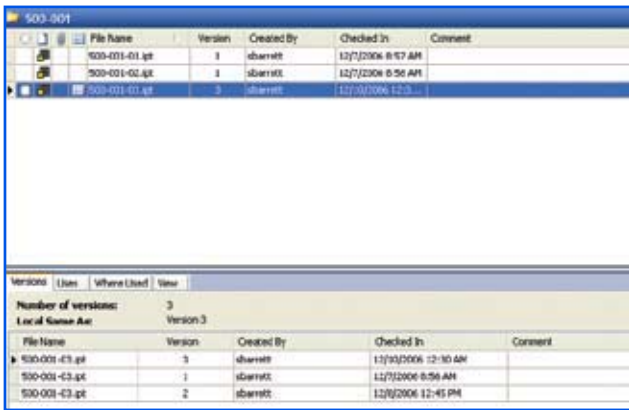
The screenshot shows the 'Item Master' software interface. The top part is a table listing various items with columns for Number, Revision, Lifecycle State, Title, Item Description, Item Type, and Units. The bottom part shows a detailed view for item 300-018, including a thumbnail image and a table of its revision history.

Number	Revision	Lifecycle State	Title	Item Description	Item ...	Units
000-000s	-	Work In Progress	000-0...	RC CAR	Assembly	Each
000-001-02	-	Work In Progress	000-0...	55mm WHEEL	Assembly	Each
100-002	-	Work In Progress	100-002	190mm BODY SHELL	Assembly	Each
300-005	-	Work In Progress	300-005	FRONT DIFFERENT...	Assembly	Each
300-009-03	-	Work In Progress	300-0...	TURNBUCKLE	Assembly	Each
300-009-05	-	Work In Progress	300-0...	TURNBUCKLE	Assembly	Each
300-012-02	-	Work In Progress	300-0...	ELECTRIC MOTOR	Assembly	Each
300-018	C	Work In Progress	300-0...	CONTROLLER REC...	Assembly	Each
300-019	-	Work In Progress	300-019	REAR DIFFERENTIAL	Assembly	Each
300-022	-	Work In Progress	300-022	DRIVE CLIP LEFT	Assembly	Each

Thumbnail	Number	Revision	Lifecycle State	Title	Item Type	Units
	300-018	C	Work In Progress	300-018.lam	Assembly	Each
	300-018	-	Released	300-018.lam	Assembly	Each

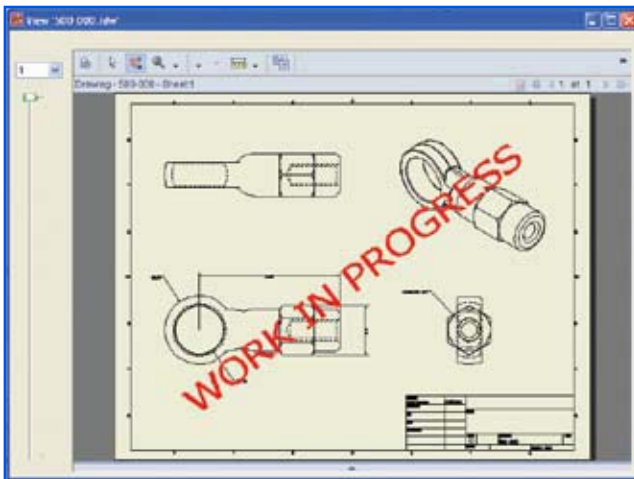
Version Management

Track design data and prevent overwriting of good designs. Manage file versions—along with related information such as assemblies, parts, and drawings—with the ability to get previous or latest versions and perform “where-used” and “uses” analyses.



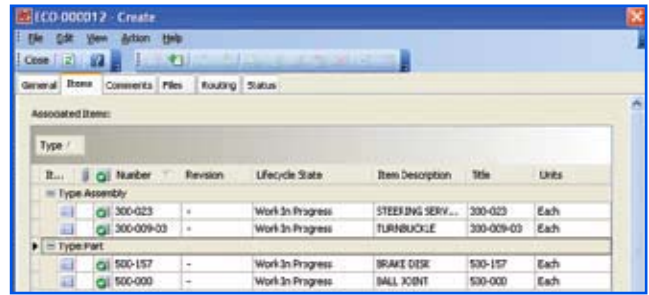
Watermarking

Automatically add watermarks to drawings that display the current lifecycle state of a design. Administrators can customize the watermark by changing the text, font, size, transparency, or location.



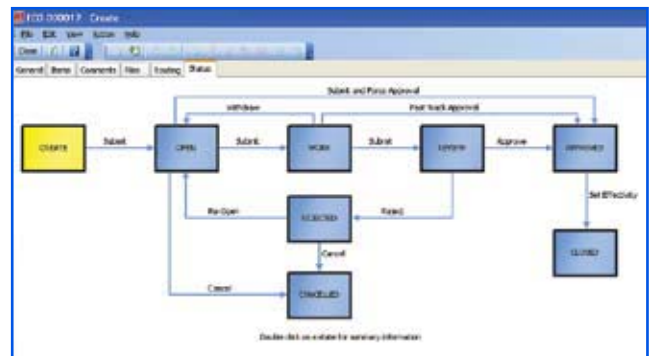
Automated ECOs

Track, audit, and monitor engineering change orders, remove process bottlenecks, and improve the efficiency of the engineering change process. Automated ECOs enable designers to approve or deny changes to all items and associated files before they are released to manufacturing.



ENHANCED ECO Workflows

Automate the ECO process and keep a record of changes, tracking comments such as notes and redlined drawings for the ECO. Route engineering changes in parallel to engineers, reviewers, and approvers throughout the design team. Use automatically generated emails to alert downstream users when changes are made and new items are released.



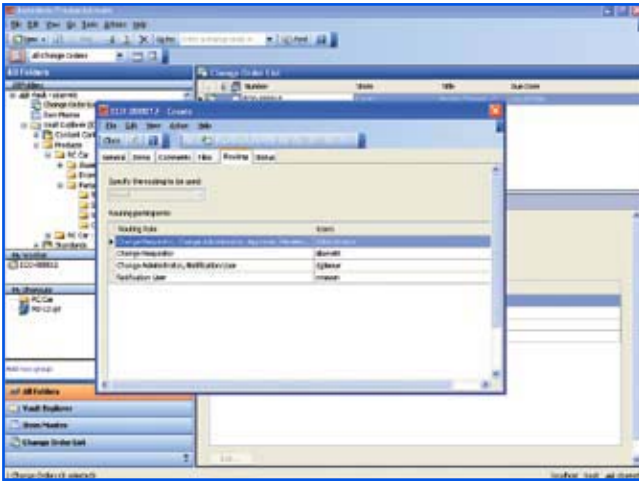
Automate and Manage Product Release and Change

ECO Forms

Forms provide standard and user-defined ECO information to participants for review, approval, or printing. Use them to reduce errors associated with paper-based processes and to help ensure that decision makers have access to complete product information.

ENHANCED ECO Routing

Automated routing of electronic ECOs means decision makers can receive, review, and approve the most current information and release designs to manufacturing in less time.



Revisions

Control and review the history of items using a flexible revision numbering scheme that conforms to your company standard.

Item	Number	Revision	Lifecycle State	Title	Item Type	Units
300-015	C	Work In Progress	300-015.am	Assembly	Each	
300-018	-	Released	300-018.am	Assembly	Each	

Where-Used and Uses

Understand the impact of changing a design before committing to the change. Analyze where specific files and items (CAD and non-CAD) have been used across multiple assemblies, drawings, and BOMs.

Number	Item Description	Revision	Lifecycle State
500-118	FITTING	A	Released
NCR-A-006	PCB	-	Released
300-018	CONTROLLER RECE...	C	Work In Progress

Lifecycle State Control

Track and communicate an item's lifecycle state using a built-in scheme (Work in Progress, Released, Purchased, Manufactured, Approved) to help ensure that products are not released before the design is final. In addition, users can choose to automatically increment a revision when an item changes state.

From State	To State	Description	Lifecycle Type
Work In Progress	Obsolete	Item has transitioned from WIP to Obsolete	Item Lifecycle
Work In Progress	Released	Item has transitioned from WIP to Released	Item Lifecycle
Work In Progress	In Review	Item has transitioned from WIP to In Review	Item Lifecycle
Released	Obsolete	Item has transitioned from Released to Obsolete	Item Lifecycle
Released	Work In Progress	Item has transitioned from Released to WIP	Item Lifecycle
Obsolete	In Review	Item has transitioned from Obsolete to In Review	Item Lifecycle
Obsolete	Work In Progress	Item has transitioned from Obsolete to WIP	Item Lifecycle
In Review	Obsolete	Item has transitioned from In Review to Obsolete	Item Lifecycle
In Review	Released	Item has transitioned from In Review to Released	Item Lifecycle

Increase Sharing and Collaboration

Efficient sharing of design data is crucial for success in manufacturing. The Productstream family of applications enables better collaboration among designers, design workgroups, manufacturers, and suppliers.

Productstream gives team members access to the latest designs and makes it possible to capture feedback from tooling, assembly, or fabrication much earlier—helping to prevent costly errors later in the process.

With standardized templates, Productstream enables users to exchange design information with enterprise resource planning (ERP) and other applications, effectively reducing the errors associated with manual BOM data entry. Another element of efficient sharing of designs is the ability to track when, why, and by whom design changes are made in the collaboration process. With Productstream, users can create an electronic paper trail that notifies decision makers, captures markups, tracks the approval flow, and maintains a complete history of design revisions.

ENHANCED Web Client

Shorten project cycles by providing a web browser that makes it easier for downstream users to access any file or item in any lifecycle state.

NEW Multisite File Synchronization

Synchronize local file stores among distributed design workgroups. Global sharing of common design helps ensure that all designers are working from the most current design while still providing them with the benefits of local storage and performance.

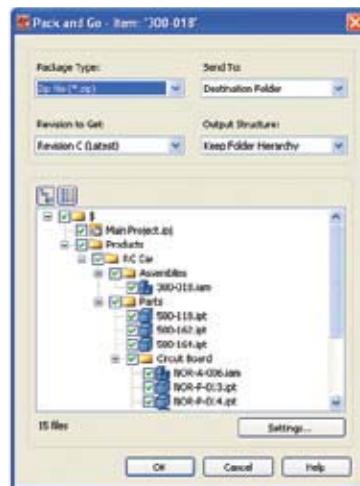
Access Control

Control access to designs by assigning permissions to users, groups of users, and folders. Quickly and easily implement customer-specific access rights, allowing access to design information based on need and job function.



Pack and Go for Items

Create an archive of all product information to preserve important data for historical and regulatory purposes. The Pack and Go feature enables manufacturing teams to create a package of all design-related data in a single, compressed file for archival purposes.



Autodesk Streamline Integration

Instantly notify suppliers and customers when new information is available, and provide access to the latest design data with automatic publishing and uploading of design data from Productstream to the Autodesk Streamline® online project collaboration service.

ENHANCED Standard Integrations for Business Systems

Integrate Productstream with existing business systems to make design information available for downstream users. Integration provides connectivity to existing enterprise resource planning (ERP) and product lifecycle management (PLM) applications, including Microsoft® Axapta®, Great Plains®, SAP® R/3, and UGS® Teamcenter® Engineering software.

2D and 3D Viewing and Markup

Quickly complete reviews and gather comments on designs using DWF™ technology to reduce communication errors in design reviews. Built-in Autodesk® Design Review software provides powerful viewing, markup, and measure functionality.

Autodesk Manufacturing

Never before have design applications and data management tools come together to simplify the way manufacturers design products and drive them through the manufacturing process. Autodesk provides a complete, interoperable line of industry-leading software integrated with a worldwide network of services and partners. Gain access to technical expertise for implementation, and utilize training and support programs direct from Autodesk to help use your design and data management software more effectively. Software maintenance programs allow you to stay up-to-date with the latest product releases and upgrades for your software. Designed to be deployed incrementally for minimal business disruption, Autodesk tools for manufacturing provide the most effective way to stay ahead of the competition and achieve maximum return on your software investment.



applied engineering technology, inc.

763-420-6600
1-866-941-6600

www.ae-solutions.com/autodesk
sales@ae-solutions.com

Learn More or Purchase

Stay ahead of the competition with Autodesk's practical approach to data management. For more information, visit www.autodesk.com/productstream.

For more information on extending the power of your data management technology, visit www.autodesk.com/subscription.

For more information on making the most of your software investment, visit www.autodesk.com/consulting.

Purchase Autodesk Productstream through your Autodesk Authorized Reseller. To locate the reseller nearest you, visit www.autodesk.com/reseller.

Autodesk, AutoCAD, Autodesk Inventor, Autodesk Streamline, DWF, Inventor, and Productstream are registered trademarks or trademarks of Autodesk, Inc., in the USA and/or other countries. All other brand names, product names, or trademarks belong to their respective holders. Autodesk reserves the right to alter product offerings and specifications at any time without notice, and is not responsible for typographical or graphical errors that may appear in this document. © 2007 Autodesk, Inc. All rights reserved.
0000000000117478