

Autodesk

Streamline® 2008

Speed your products
to market.



Accelerate Your Product Development Process



The setup and maintenance of Autodesk Streamline is very user friendly. It is a great thing to give the engineers control of their own destiny by sharing information during a project and by eliminating the need to go through an IT group to grant access to the suppliers.

—Lynn Brenton
Lithonia Lighting

With Autodesk Streamline® on-demand collaborative project management solution, you can easily and securely share documents across your organization and beyond your firewall.

Your innovative new product is cruising toward release. Designers have created drawings, assigned part numbers, and carefully tracked revisions by engineers. Now it's time to share designs with partners outside your company. With every day you wait for their feedback, your chances of being first to market slip away. When you send designs by courier, fax, and email, you introduce expenses, delays, and confusion into the review cycle.

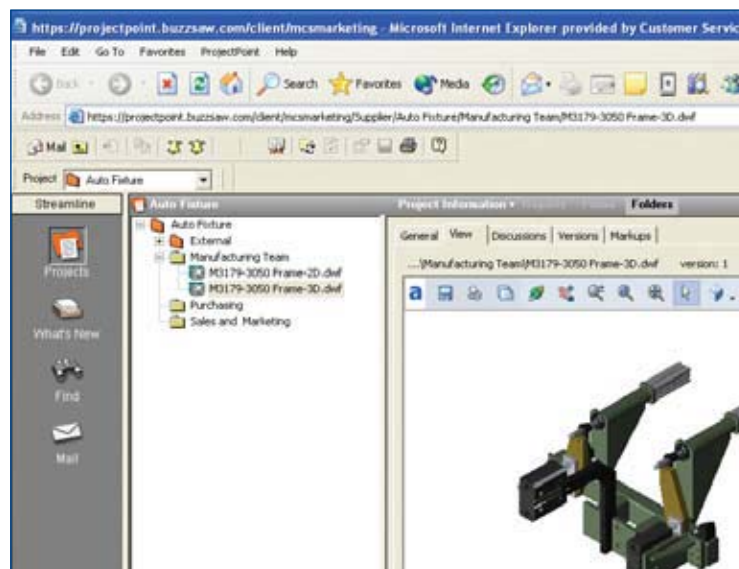
Autodesk Streamline on-demand collaborative project management solution helps you handle the process of collaborating with partners outside your organization, with a single online location for storing, managing, and controlling project documents. Using an intuitive interface, your extended team can work productively with customers and suppliers outside your firewall to get designs approved in less time.

Collaborate with Suppliers Online

Sharing accurate design information with your suppliers is critical. Avoid the risk of delays, lost documents, and obsolete versions due to last-minute changes. Autodesk Streamline allows you to share drawings and specs with your suppliers in one location, on demand. It helps keep your projects moving by notifying relevant personnel when new documents are posted, and by tracking when reviews and approvals are overdue. Use Autodesk Streamline as your centralized location for all project documents.

With Autodesk Streamline, you can

- Display design files online to solicit bids from multiple suppliers at the same time
- Let engineers collaborate directly with suppliers
- Enable suppliers to use your latest specifications to build parts
- Protect your intellectual property



Autodesk Streamline Web Access

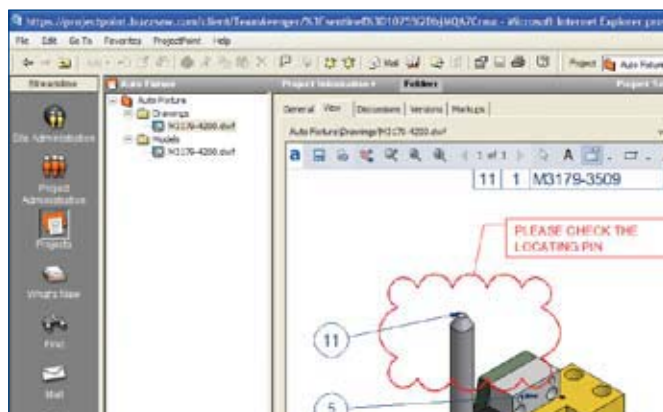
Access all Autodesk Streamline functions, including managing and communicating on product documents, notifications, workflow, and reporting, without downloading and installing a separate, bulky PC application. The Autodesk Streamline web-based approach dramatically simplifies administration and maintenance.

Because the free* Autodesk® Design Review software is embedded in Autodesk Streamline, your vendors and original equipment manufacturers around the world can review drawings without needing access to your native design data. They can zoom in and out and view 3D designs from different angles. Locking and versioning capabilities prevent errors and confusion. Suppliers publish completed designs to Autodesk Streamline, so you can give immediate feedback and speed your time to market. Meanwhile, encrypted connections and configurable permissions protect your ideas from security threats.

Trim Days from Your Review Cycles

Autodesk Streamline helps you and your customers speed reviews and approvals. Your customers can view and mark up designs online—and get speedy answers to their product spec questions. At every stage, your customers have visibility into the product development process, which helps them determine how soon their products will be ready. Closer collaboration and faster turnarounds lead to greater customer satisfaction and leave you more time to focus on product innovation.

With Autodesk Streamline, routing designs for customer review can be a same-day process. After creating a design, your engineer can publish it to the Autodesk Streamline site. Your customer receives an automatic email notification to review the design. The customer approves the design or marks up changes online. Autodesk Streamline notifies your project managers when changes are posted. If there are misunderstandings between you and a customer, the Autodesk Streamline audit trail helps everyone retrace their steps.



Integration with 3D DWF Format

Safely and securely publish 3D DWF™ file specification drawings from Autodesk Inventor software directly to the Autodesk Streamline service. View, rotate, and orbit 3D drawings containing thousands of components and parts to get a full understanding of the designer's intent.

Autodesk Manufacturing

Never before have design applications and data management tools come together to simplify the way manufacturers design products and drive them through the manufacturing process. Autodesk provides a complete, interoperable line of industry-leading software integrated with a worldwide network of services and partners. Gain access to technical expertise for implementation, and utilize training and support programs direct from Autodesk to help use your design and data management software more effectively. Software maintenance programs allow you to stay up-to-date with the latest product releases and upgrades for your software. Designed to be deployed incrementally for minimal business disruption, Autodesk tools for manufacturing provide the most effective way to stay ahead of the competition and achieve maximum return on your software investment.



applied engineering technology, inc.

763-420-6600

1-866-941-6600

www.ae-solutions.com/autodesk
sales@ae-solutions.com

Get More Information

To learn more about how Autodesk Streamline can help you share designs efficiently and cost-effectively outside your firewall, contact us by calling 866-815-3501 (415-356-0700 outside the United States), send email to streamline.sales@autodesk.com, or visit www.autodesk.com/streamline.

*This product is subject to the terms and conditions of the end-user license agreement that accompanies download of this software.

Autodesk, Autodesk Streamline, and DWF are registered trademarks or trademarks of Autodesk, Inc., in the USA and/or other countries. All other brand names, product names, or trademarks belong to their respective holders. Autodesk reserves the right to alter product offerings and specifications at any time without notice, and is not responsible for typographical or graphical errors that may appear in this document. © 2007 Autodesk, Inc. All rights reserved. 00000000000117649

Autodesk®