

**Autodesk®**

PortfolioWall® 2008

See the visualization  
on the wall.

# Discover how Autodesk PortfolioWall software makes 2D and 3D digital assets more accessible and visible.



## Gather and Organize Visual Data

Gather and organize visual data quickly and easily with Autodesk® PortfolioWall® software—a simple yet valuable tool to collect, organize, and view digital images and assets such as sketches and concept drawings, competitive products, previous models, photographs, documents, and works in progress.

## A Unique Presentation and Design Review Tool

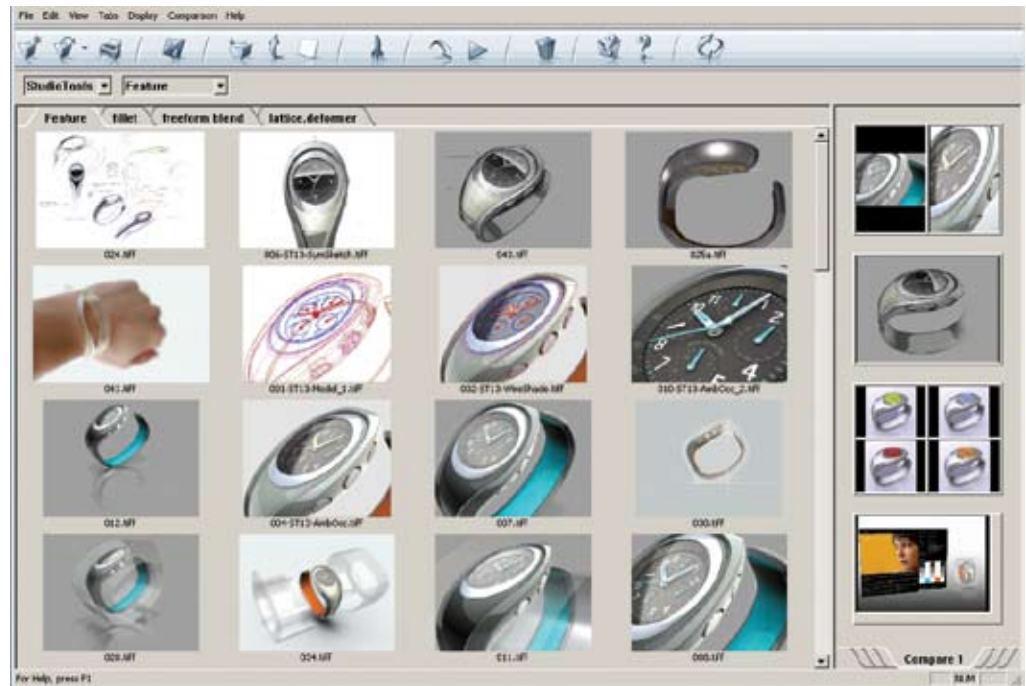
Quickly review visual assets relevant to a project. Zoom into, view at real-world scale, annotate, and compare the images. The innovative technology in PortfolioWall also simplifies the process of creating presentations and makes them more dynamic. PortfolioWall works in meeting rooms, presentation centers, studios, and on the desktop.

## Reduce Delays in Design Reviews and Decision Making

Make decisions on visual assets more effectively than ever, and avoid design delays caused by waiting for design reviews. Streamline the review process for executives, managers, clients, designers, and artists involved in the creative process. Autodesk PortfolioWall software also includes Autodesk StudioViewer, a stand-alone evaluation, presentation, and review tool for 3D models.

## Facing these issues?

- Design images and data are less accessible because they are in computers, instead of on studio walls.
- Gathering and organizing many types of digital data and assets is difficult.
- There are too many reviews and presentations of visual data for collaboration and decision making.
- Projects are being delayed by design reviews and the decision-making process.



# Key Features

## Simple User Interface

PortfolioWall is designed for users at any level of technical expertise and can be learned in minutes.

## View

Use thumbnails to select and view 2D and 3D data at full-screen resolution.

## Compare

Evaluate two or more designs side by side. Create a composite of multiple images and save it for future use. Use the overlay image comparison tool to compare similar images with subtle changes.

## Real-World Scaling

Display to scale to get an accurate sense of the real size of an object or image.

## Print

Activate printing of thumbnails, single images, or comparisons by dragging to the print icon. Optional password prevents unauthorized printing.

## Annotation and Markup

Easily add sketch or text annotations to images during design reviews using integrated markers or text notes. Annotations are stored on nonintrusive layers, not on the original image.

## Easy Data Organization

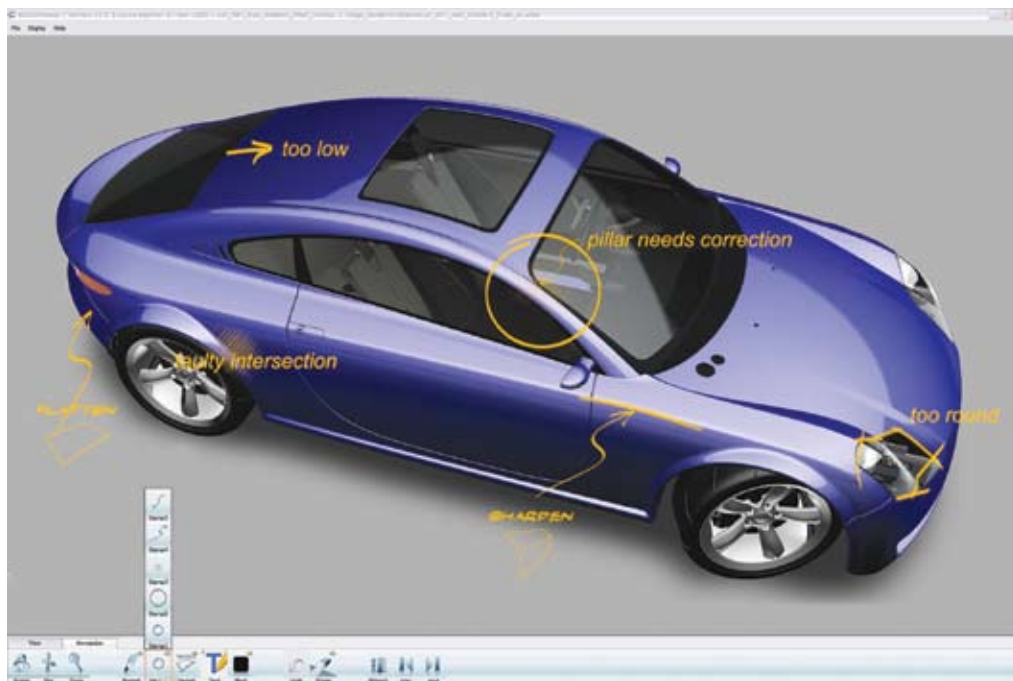
Easily organize data into projects, subprojects, and folders. Temporarily hide tabs, folders, and images to reduce visual clutter for presentations or while organizing data.

## Pack and Go

Package Autodesk PortfolioWall software projects, including all referenced images and files, in one convenient file for easy exchange, sharing, and archiving.

## Launch Third-Party Applications

Launch any Microsoft® Windows® application associated with any file type from PortfolioWall. This capability means designers can use PortfolioWall software as a visual interface to a variety of applications, from computer-aided design (CAD) software to word processing, spreadsheets, and more.



## Drag-and-Drop

Add data from and to the desktop, rearrange data and tabs, delete and print, and move images between PortfolioWall and other applications that support drag-and-drop.

## 2D Image Viewing

PortfolioWall provides the ability to view a wide range of 2D images, including BMP, EPS, GIF, IFF, JPEG, PIC, PIX, RGB, TGA, TIFF, Adobe® Photoshop®, and PSD formats. Movie files are also supported: AVI, Flash® (noninteractive), Apple® QuickTime® MOV, and MPG.

## Remote File Management

Use PortfolioWall to access data on remote web servers. Integrate PortfolioWall with product data management (PDM) and product lifecycle management (PLM) systems that also support the WebDAV protocol.

## Autodesk StudioViewer

PortfolioWall software includes Autodesk StudioViewer, an evaluation, presentation, and review tool for 3D models from Autodesk® AliasStudio™ software or other 3D packages.

## 3D Model Viewing

A simple user interface with controls to tumble and zoom models or rotate on a virtual turntable makes 3D data accessible to anyone involved in the design process. StudioViewer software delivers fast performance for large data sets, high-quality image display, and diagnostic evaluation tools for examining surface quality.

## Simultaneous 2D/3D Viewing

View 2D images and 3D models simultaneously for design review and collaboration. Review design sketches alongside 3D concept models, while tumbling the model.

## High-Quality Visualization

StudioViewer delivers state-of-the-art, interactive visualization of 3D models created in the AliasStudio application.

## Bookmarks and Annotations

Bookmarks are snapshots that capture exactly what is being viewed at any time. Annotations and bookmarks created in StudioViewer can also be seen in AliasStudio and vice versa, helping to ensure seamless communication between reviewers and designers/modelers.

## Autodesk Manufacturing

Never before have design applications and data management tools come together to simplify the way manufacturers design products and drive them through the manufacturing process. Autodesk provides a complete, interoperable line of industry-leading software integrated with a worldwide network of services and partners. Gain access to technical expertise for implementation, and utilize training and support programs direct from Autodesk to help use your design and data management software more effectively. Software maintenance programs allow you to stay up-to-date with the latest product releases and upgrades for your software. Designed to be deployed incrementally for minimal business disruption, Autodesk tools for manufacturing provide the most effective way to stay ahead of the competition and achieve maximum return on your software investment.

### **Learn More or Purchase**

For more information about Autodesk PortfolioWall software, visit [www.autodesk.com/porfoliowall](http://www.autodesk.com/porfoliowall).

For more information on resources to help you with crucial support issues, visit [www.autodesk.com/support](http://www.autodesk.com/support).

Cover rendering courtesy of Daniel Simon.

Autodesk, AliasStudio, and PortfolioWall are registered trademarks or trademarks of Autodesk, Inc., in the USA and/or other countries. All other brand names, product names, or trademarks belong to their respective holders. Autodesk reserves the right to alter product offerings and specifications at any time without notice, and is not responsible for typographical or graphical errors that may appear in this document. © 2007 Autodesk, Inc. All rights reserved. 000000000000117608